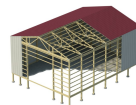


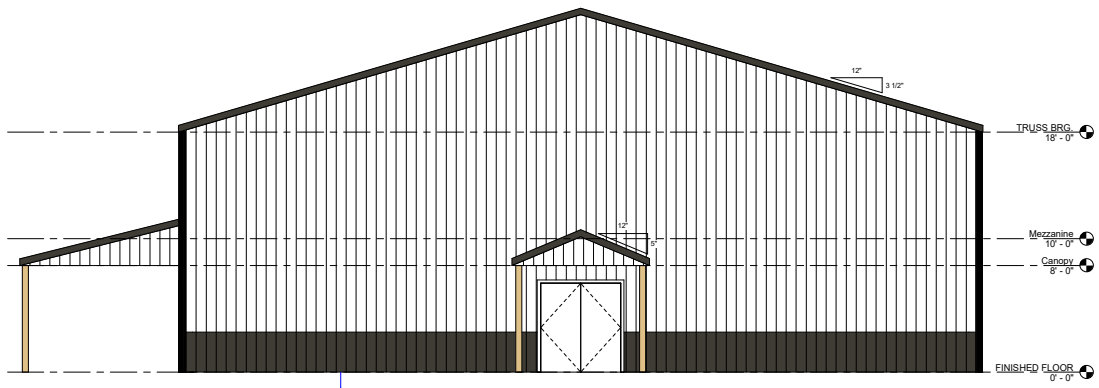
Ⓞ FLOOR PLAN
1/4" = 1'-0"

A1	REVISIONS
	DATE
NO.	DESCRIPTION
1	ISSUED FOR PERMIT
2	REVISED PER COMMENTS
3	REVISED PER COMMENTS
4	REVISED PER COMMENTS
5	REVISED PER COMMENTS
6	REVISED PER COMMENTS
7	REVISED PER COMMENTS
8	REVISED PER COMMENTS
9	REVISED PER COMMENTS
10	REVISED PER COMMENTS

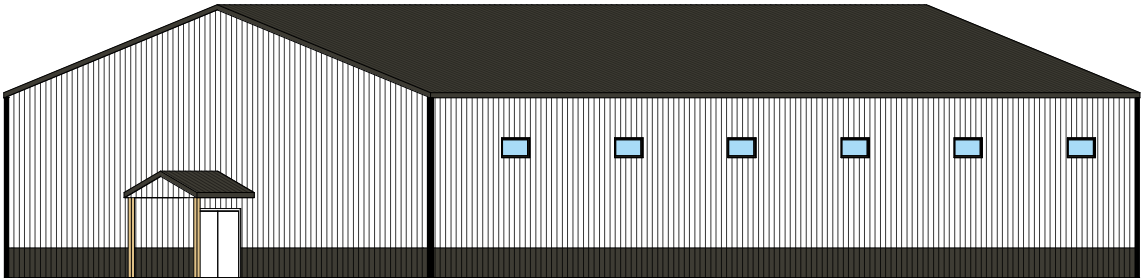
NEW BUILDING
FOR
Mars Hill Youth Center



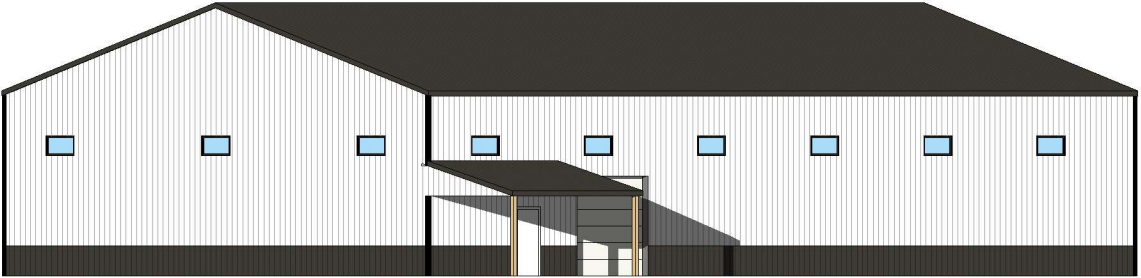
7716 N 900 E
MONTGOMERY, IN 47958
(800) 264-5013
www.graberpost.com



② 1/4" = 1'-0"



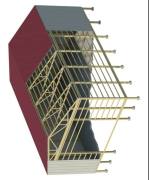
① 3/16" = 1'-0"



③ 3/16" = 1'-0"



7716 N 900 E
MONTGOMERY, IN 47568
(317) 835-1100
www.graberpost.com



NEW BUILDING FOR
Mars Hill Youth Center

COPYRIGHT 2011 GRABER POST BUILDINGS. THE DRAWINGS, DESIGN INTENT AND CONCEPTUAL DATA CONTAINED IN THESE DOCUMENTS ARE THE PROPERTY OF THE DESIGNER AND ARE PROTECTED UNDER FEDERAL COPYRIGHT LAWS. ANY REUSE OR REPRODUCTION OF THESE DOCUMENTS REQUIRES WRITTEN PERMISSION FROM GRABER POST BUILDINGS.

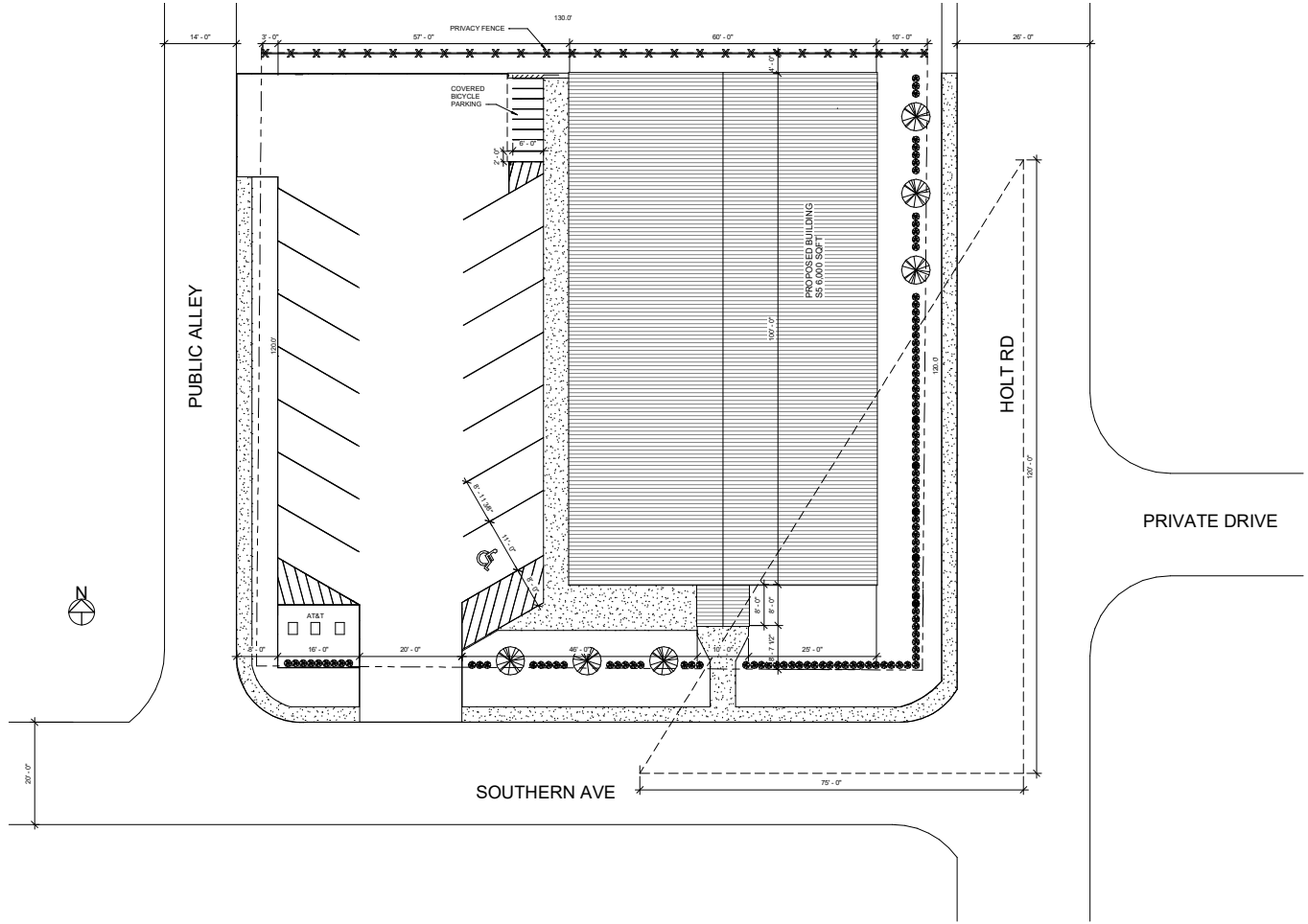
REV	DATE	DESCRIPTION
▲		
▲		
▲		
▲		
▲		

DATE: 01/22/19
DRAWN: SS
CHECKED: Checkov

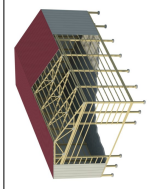
A2

ELEVATIONS

2556 S HOLT RD INDIANAPOLIS, IN 46241



① SITE PLAN
1" = 10'-0"



7716 N 900 E
MONTGOMERY, IN 47568
(317) 226-1111
www.graberpost.com

NEW BUILDING FOR Mars Hill Youth Center

COPYRIGHT 2011 GRABER POST BUILDINGS. THE DRAWINGS, DESIGN INTENT AND CONCEPTUAL DATA CONTAINED IN THESE DOCUMENTS ARE THE PROPERTY OF THE DESIGNER AND ARE PROTECTED UNDER FEDERAL COPYRIGHT LAWS. ANY REUSE OR REPRODUCTION OF THESE DOCUMENTS REQUIRES WRITTEN PERMISSION FROM GRABER POST BUILDINGS.

REV	DATE	DESCRIPTION
▲		
▲		
▲		
▲		
▲		

DATE: 02/01/18
DRAWN: Aulay
CHECKED: Checkov

A3

SITE